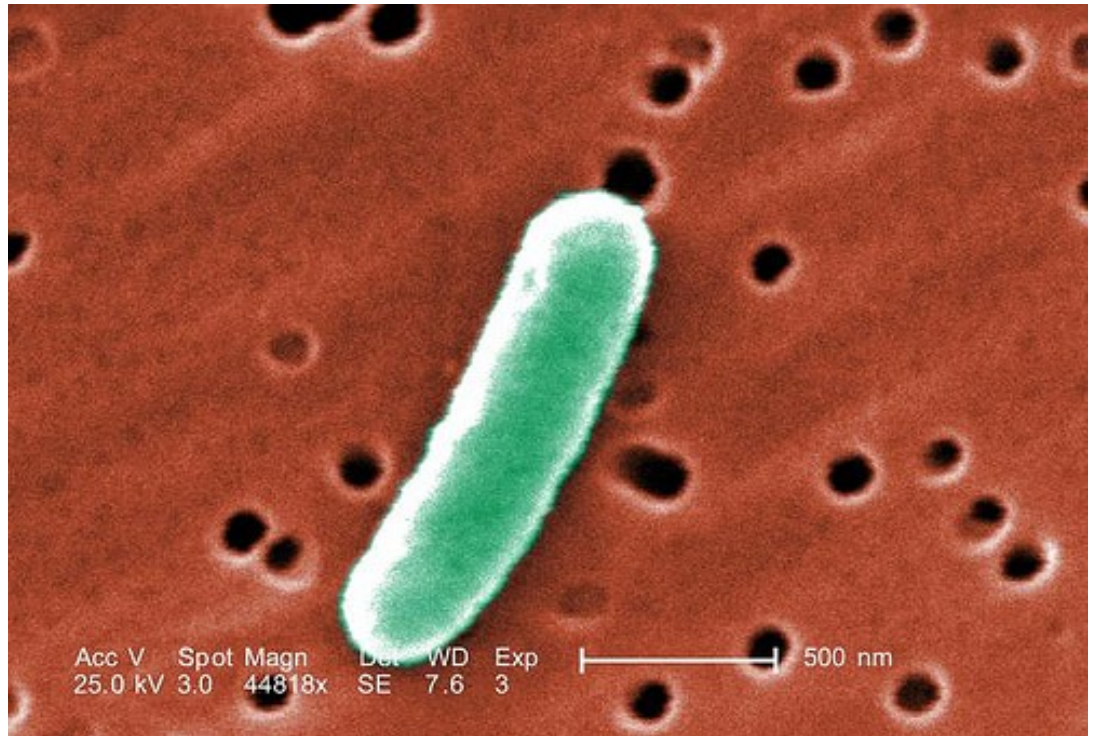


# FOOD MICROBIOLOGY



**EMSL ANALYTICAL, INC.**  
LABORATORY • PRODUCTS • TRAINING



E-coli

More than 75 million cases of food borne illness are reported each year in the US. Whether you are seeking compliance to FDA regulations or have a unique need, EMSL has a laboratory near you that specializes in microbial testing for those who manufacture, process, pack or hold food.

For over 30 years EMSL has led the industry in testing and analysis. Our professional staff of trained scientists, technicians and analysts can also provide Method Validation & Development.

# MICROBIOLOGICAL Laboratory Services

Submit 2 oz sample per analyte requested\*

- Aerobic Plate Count
- Aerobic Spore Former Count
- Anaerobic Plate Count
- Anaerobic Spore Former Count
- Bacillus Cereus
- Bacterial Identification
- Bacterial Population (Aerobic Plate Count)
- Campylobacter (Presence/Absence)
- Canner's Test
- Coagulase Positive Staphylococcus
- Contamination Source Tracking
- Cyclospora (Presence/Absence)
- Detection of Clostridium Botulinum Types A, B, E, and F
- E. coli O157:H7 (Presence/Absence) - RUSH SERVICE AVAILABLE**
- Enterobacteriaceae
- Food DNA Authentication
- Fungal Identification
- Fungal Population (Yeast & Mold)
- GMO Analysis
- Isolate Identification – Bacterial
- Isolate Identification – Fungal

**Standard Panel**

- ◆ Aerobic Plate Count
- ◆ Total Coliform / E. coli
- ◆ Staphylococcus

- Lactic Acid Bacteria Count
- Lactobacillus Species Count
- Listeria (Presence/Absence) - RUSH SERVICE AVAILABLE**
- Listeria Monocytogenes
- Matrix Specific Method Validation
- Meat Speciation by PCR
- Non-O157 Shiga-toxin Producing E. coli (STEC) – O26, O45, O103, O111, O12, O145
- Pathogen Confirmation
- Pseudomonas Aeruginosa
- Salmonella (Presence/Absence) - RUSH SERVICE AVAILABLE**
- Sanitation Validation
- Shigella by qPCR & Culture - RUSH SERVICE AVAILABLE**
- Somatic Cell Count by Direct Microscopy
- Special Projects
- Spoilage Organisms
- Staphylococcus Aureus
- Thermophilic Aerobic Spore Former Count
- Thermophilic Anaerobic Spore Former Count
- Total Coliform / E. coli
- Yeast & Mold

Methods offered include: FDA/BAM, USDA, USP, AOAC, CMMEF



**EMSL ANALYTICAL, INC.**  
LABORATORY • PRODUCTS • TRAINING

[www.FoodTestingLab.com](http://www.FoodTestingLab.com)

**800.220.3675**

EMSL Analytical, Inc. is an independent, contract testing laboratory specializing in  
 Chemistry  
 Food Testing  
 Materials Analysis  
 Failure Analysis  
 Microbiology

**FDA Registered and DEA Licensed  
 cGMP and ISO 17025 Compliant**

## EMSL Analytical Locations

